

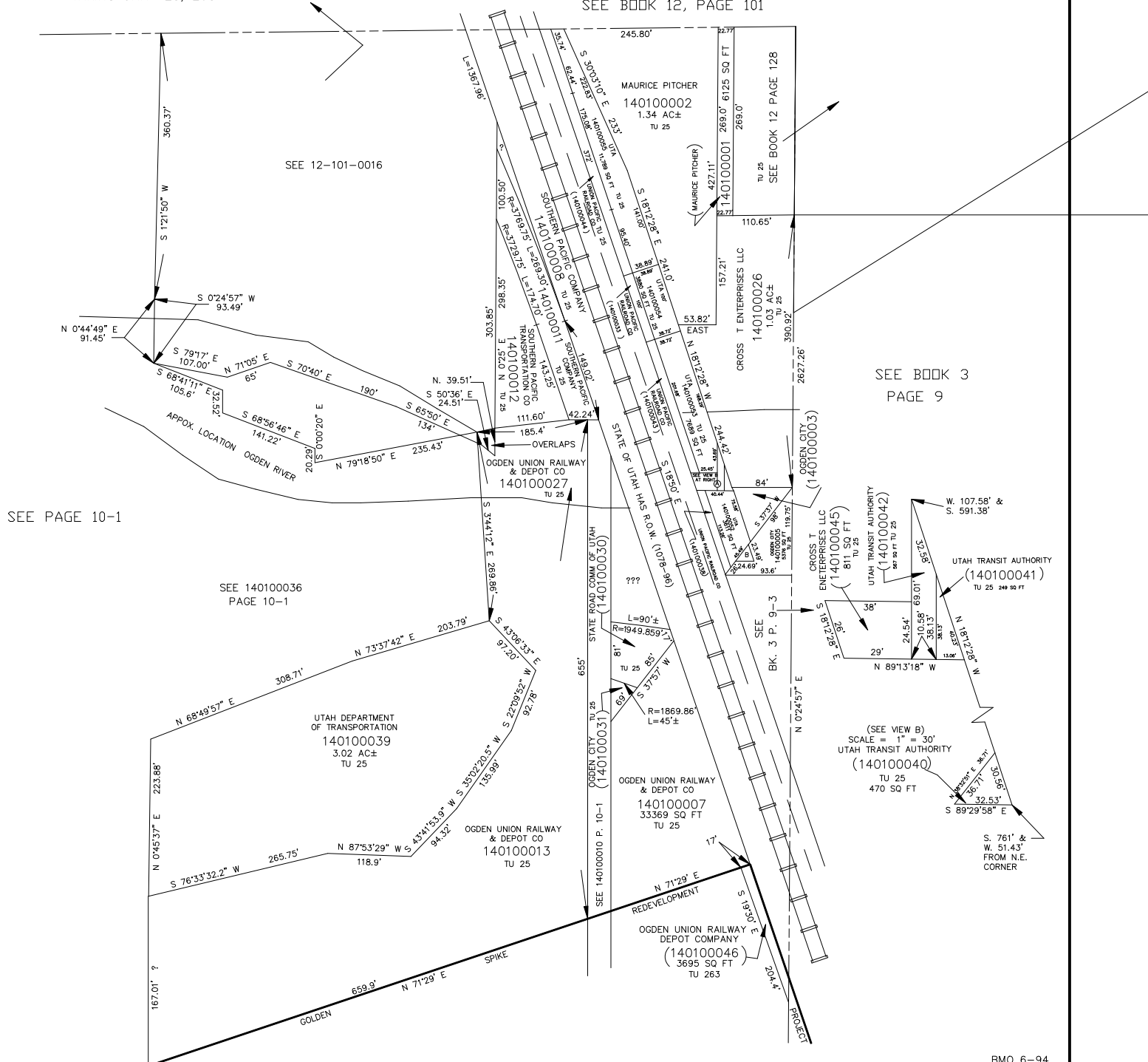
PART OF THE N.E. 1/4
SECTION 30, T.6N., R.1W., S.L.B. & M.

IN OGDEN CITY

TAXING UNIT: 25, 263

SCALE 1" = 100'

SEE BOOK 12, PAGE 101



SEE 12-101-0016

MAURICE PITCHER
140100002
1.34 AC±
TU 25

CROSS T ENTERPRISES LLC
140100026
1.03 AC±
TU 25

SEE BOOK 3
PAGE 9

SEE PAGE 10-1

SEE 140100036
PAGE 10-1

UTAH DEPARTMENT
OF TRANSPORTATION
140100039
3.02 AC±
TU 25

OGDEN UNION RAILWAY
& DEPOT CO
140100007
33369 SQ FT
TU 25

OGDEN UNION RAILWAY
& DEPOT CO
140100013
TU 25

OGDEN UNION RAILWAY
DEPOT COMPANY
(140100046)
3695 SQ FT
TU 263

(SEE VIEW B)
SCALE = 1" = 30'
UTAH TRANSIT AUTHORITY
(140100040)
TU 25
470 SQ FT

UTAH TRANSIT AUTHORITY
(140100041)
TU 25 249 SQ FT

S. 761' &
W. 51.43'
FROM N.E.
CORNER